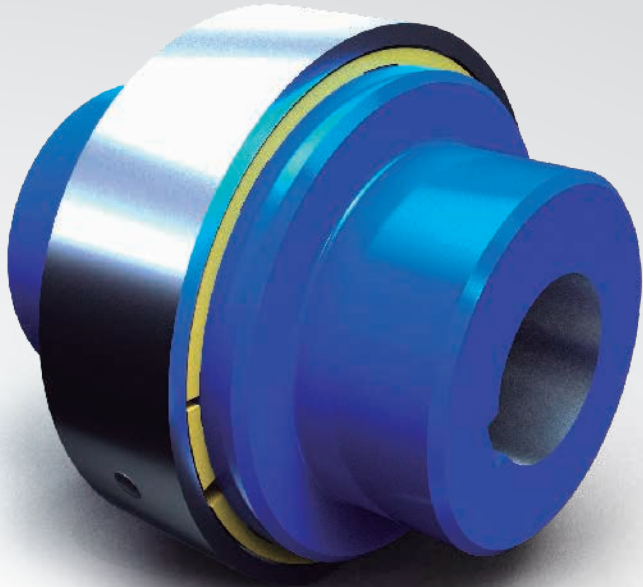


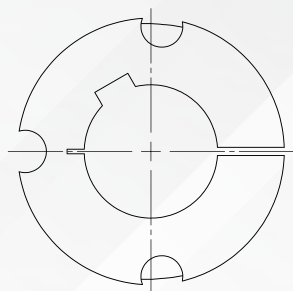
 une



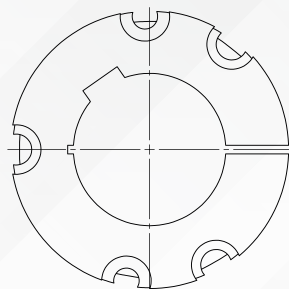
TAPER BUSHES, BORES & KEYWAYS



Taper Bushes



Type A



Type B



Ø [mm]	1008	1108	1210	1610	2012	2517	3020	3525	3535	4040	4545	5050
9	•	•										
10	•	•										
11	•	•	•									
12	•	•	•	•								
14	•	•	•	•	•							
16	•	•	•	•	•	•						
18	•	•	•	•	•	•						
19	•	•	•	•	•	•						
20	•	•	•	•	•	•						
22	•	•	•	•	•	•						
24	•	•	•	•	•	•						
25	•	•	•	•	•	•	•					
28	•(*)	•	•	•	•	•	•					
30		•(*)	•	•	•	•	•					
32			•	•	•	•	•					
35			•(*)	•	•	•	•	•	•			
38				•	•	•	•	•	•			
40				•	•	•	•	•	•	•		
42				•(*)	•	•	•	•	•	•		
45					•	•	•	•	•	•		
48					•	•	•	•	•	•		
50					•	•	•	•	•	•		
55						•	•	•	•	•	•	
60						•	•	•	•	•	•	
65						•(*)	•	•	•	•	•	
70							•	•	•	•	•	•
75							•	•	•	•	•	•
80								•	•	•	•	•
85								•	•	•	•	•
90								•	•	•	•	•
95									•	•	•	•
100										•	•	•
105											•	•
110											•	•
115												•
120												•
125												•
Type	A	A	A	A	A	A	A	B	B	B	B	B
Screws	1/4"x1/2"	1/4"x1/2"	3/8"x5/8"	3/8"x5/8"	7/16"x7/8"	1/2"x1 1/4"	5/8"x 1 1/4"	1 1/8"x 1 1/2"	1 1/8"x1 1/2"	5/8"x1 3/4"	3/4"x2"	7/8"x2 1/4"

(*) Delivery size with flat keyway

TAPER BUSHES, BORES & KEYWAYS



Bores, keys and keyways according to DIN 6885/1

SHAFT Ø	HUB KEYWAY	KEY DIMENSIONS	SHAFT KEYWAY
> 8-10	3 x 1,4	3 x 3	3 x 1,8
> 10-12	4 x 1,8	4 x 4	4 x 2,5
> 12-17	5 x 2,3	5 x 5	5 x 3
> 17-22	6 x 2,8	6 x 6	6 x 3,5
> 22-30	8 x 3,3	8 x 7	8 x 4
> 30-38	10 x 3,3	10 x 8	10 x 5
> 38-44	12 x 3,3	12 x 8	12 x 5
> 44-50	14 x 3,8	14 x 9	14 x 5,5
> 50-58	16 x 4,3	16 x 10	16 x 6
> 58-65	18 x 4,4	18 x 11	18 x 7
> 65-75	20 x 4,9	20 x 12	20 x 7,5
> 75-85	22 x 5,4	22 x 14	22 x 9
> 85-95	25 x 5,4	25 x 14	25 x 9
> 95-110	28 x 6,4	28 x 16	28 x 10
> 110-130	32 x 7,4	32 x 18	32 x 11
> 130-150	36 x 8,4	36 x 20	36 x 12
> 150-170	40 x 9,4	40 x 22	40 x 13
> 170-200	45 x 10,4	45 x 25	45 x 15

If not specified, the tolerance of the hub bore diameter is H7, and for the hub keyway width for parallel keys is ISO JS9 or ISO P9 for heavy-duty operating conditions.

UNE couplings are supplied pilot bored. Therefore, unbored or finished bored with keyway execution should be detailed if required. If threads and setscrews according to EN ISO 4029 for key fixation are also required, the explicit information should be provided.

The maximum permissible bore diameters (see technical data tables of each coupling) must not be exceeded, as the coupling may tear.



Proper Use

Maintenance work must only be carried out by suitably trained and qualified personnel when the equipment is stationary and has been made safe.

Please protect the coupling against unintentional touch providing the necessary protection devices and caps.



Cr. GI-2632 km7,8
20709 Ezkio (Guipúzcoa), Spain
+34 943 72 07 65
comercial@grupooria.com
www.eganagroup.com